



*30 years' history*



## IDENTITY AND TRADITION

INMED S.A. means over thirty years of tradition, innovation and experience in the medical industry. Our roots go back to the 1980s, when our team in Wrocław gained its first valuable experiences. In 1995, the company adopted its current structure, undergoing several transformations over the years, what has driven its development. The culmination of these changes was the transition into a joint-stock company in 2022, what confirmed our position as a strong and trusted brand. Today, as INMED S.A., we are proud to be employing hundreds of skilled specialists who design and execute the most complex medical projects. Since the very

beginning we have been focusing on medical gas pipeline systems, what has allowed us to achieve a leading position in medical gas field. Our modern plant, being expanded for more than two decades, makes it possible to manufacture tens of thousands of medical supply units annually, which is quite an achievement. Every product that comes out of our hands is a symbol of the highest quality and innovation, fully reflecting our mission.



## HERITAGE OF INNOVATION

INMED logo, both in its classic and modern form, is a symbol of our brand, combining style and the highest quality. Recognized worldwide, it reflects our commitment to innovation and our contribution to improving global standards. Each product and service means striving for excellence, which shapes the future of medical sector.

Our heritage – the foundation of our identity – is extremely important to us. With respect for the past and passion for the future, we are constantly creating new, exciting chapters in the history of INMED.





## METAPHYSICS OF CREATION

Every day for me as the president of INMED S.A. is a journey into human potential, far beyond everyday life. Every meeting with our staff, every moment of observing their work, is an almost metaphysical experience – like immersing into endless possibilities of human creativity and determination.

The greatest inspiration for me is seeing how these daily activities—challenges, successes and moments of reflection – are intertwined into one never-ending story of human passion. This is not just a company, just products. It is the story of people who stand out, raise the bar, go beyond the norm and create new quality in medical sector.

It is a journey that I am privileged to observe and in which I have the pleasure of participating every day.







EVERY EMPLOYEE AT INMED  
IS MORE THAN JUST AN EMPLOYEE





## INDIVIDUAL STORIES

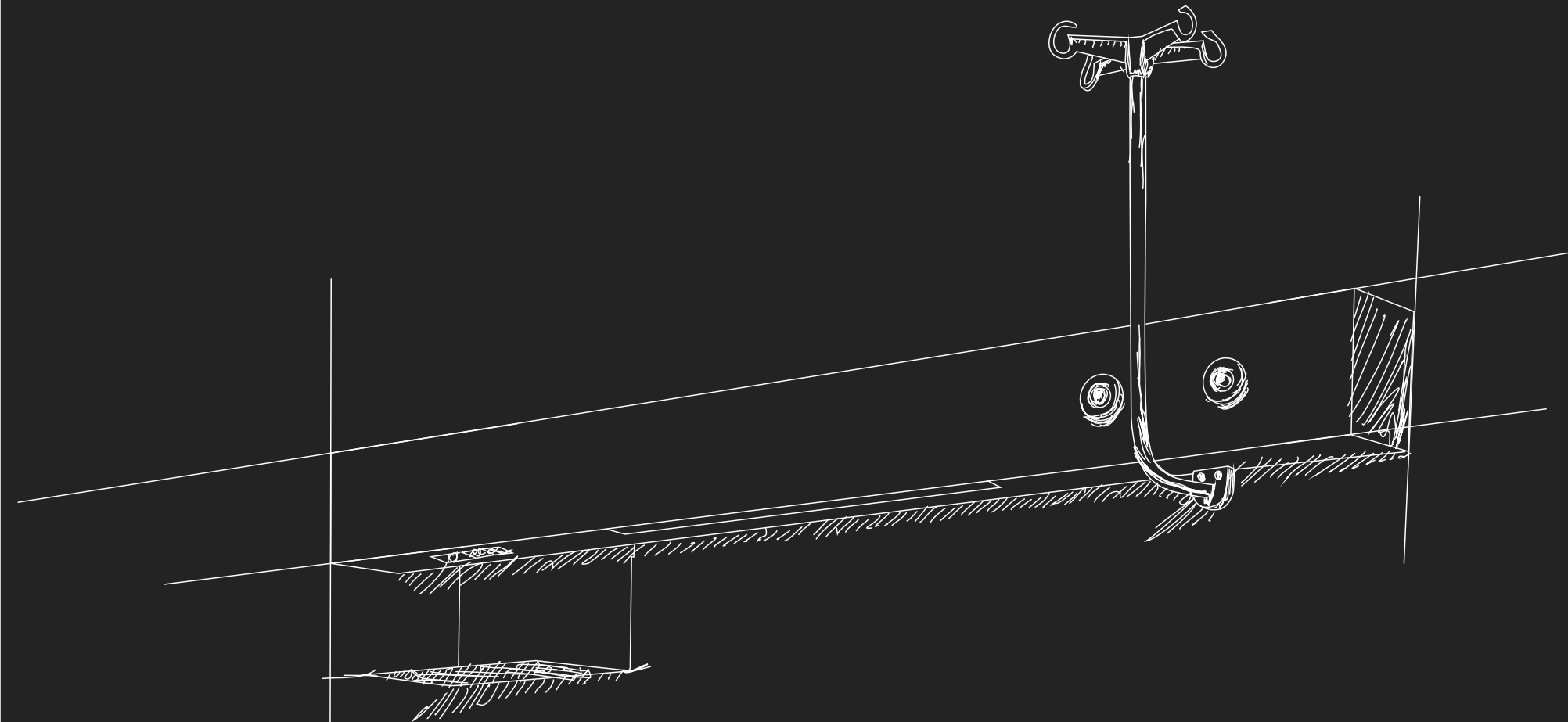
The spirit of the explorer and the pioneer lies within each individual's heart. At INMED, every team member brings their unique story. These are people who not only work at INMED but also shape its soul – they are curious about the world, full of passion and eager to set new directions, continually striving for the exceptional. Every day, our employees come to work deeply committed to bringing more than just their skills – they bring an enthusiasm for discovery, a desire to create a better future and a drive for continuous improvement. At INMED, we understand that **true responsibility** goes beyond business – it involves caring about every detail, striving for perfection and respecting every life that our

products may impact. Our commitment to the highest standards results from a common mission – not only to meet expectations but to exceed them, shaping the future of healthcare sector with high level of self-confidence and style. Just as every diamond is more than just a stone, every employee at INMED is more than just an employee.





## BED HEAD UNITS



We proudly present our exceptional family of bed head units that reflect our passion, experience, creativity and constant drive for excellence. Every product we create results from the commitment of both our team and our cooperation with customers. We are proud of this unique line of products, which not only meets the highest standards but also reflects our identity.

Our bed head units are more than just medical equipment – they are part of the family we called MERY family. Every element is carefully designed to meet diverse needs. We offer classic solutions, types dedicated to children and exclusive versions that meet the expectations of the most demanding users.

We invite you to discover our MERY family of bed head units and experience the harmony of innovation and beauty that lies in every detail.



# MERYclassic

MERYclassic, our flagship product in the bed head units family, has continuously evolved over more than twenty years, maintaining its leadership position on the market. In its latest version, it combines elegant design with the most advanced functionalities, which have cemented its prestige and popularity.

MERYclassic BHU is appreciated in hospitals for its efficient lighting and exceptional configuration flexibility, making it an ideal choice for the most demanding users. Its clever design, ensuring simplicity of use and easy access to technical installations, is the result of years of experience, making the product not only functional but also friendly for technical personnel and installers.

The exceptional value of MERYclassic is also evidenced by its popularity – with over tens of thousands of units sold worldwide, it is a basic unit in our offer, consistently meeting the highest expectations.







## EXPERIENCE OF EXCELLENCE

MERYclassic BHU offers unlimited configuration options, allowing full customization to the individual needs of each hospital room. Additional features, such as AmbientLight and HandsFree, increase comfort and efficiency, making MERYclassic an essential component of modern medical facilities. The AmbientLight comes as design element, offering lighting through both traditional lighting covers and front cover illumination with RGB colour selection in real-time. This creates a very calm atmosphere that is particularly important in medical environment. The HandsFree system provides touchless light control through programmed gestures, highlighting the innovative technology that can be used in bed head



units. Additionally, the option to choose the tilt angle of the upper and lower parts of the unit, which houses the lighting cover (5° or 25°), allows precise adjustment of light distribution to meet user needs. Such a combination of aesthetics and innovation sets new standards in medical sector, increasing the quality and comfort of key treatment procedures.





# MERYlight

MERYlight is our response to the challenge of combining the functionality of the classic version with a modern and elegant design. Thanks to engineering precision, years of experience and a touch of creativity, we have created a bed head unit that is exceptionally light, slim and aesthetically pleasing, maintaining full ergonomics and versatility. MERYlight, harmoniously combining light and lightness, stands out not only for its visual appeal but also for its versatility. Unique aluminum profiles offer almost unlimited configuration possibilities of electrical sockets, medical gas outlets and lighting. The aesthetics, innovation, and functionality of MERYlight set new standards in bed head units design, making it not only a practical solution but also a visually captivating element that increases the quality of the medical environment.







## IN THE SHADOW OF MIRACLES: HEROES OF BIRTH



In the heart of every hospital ward, where life takes its first breath, our products play a quiet yet immensely important role. At first glance, they may seem like just pieces of metal and plastic, but they are something much greater – an essential part of the miracle of birth and life.

Precisely designed and perfectly manufactured, these devices support those in the front lines – midwives, doctors and medical staff—allowing them to perform their duties with the utmost care. While we often remain unnoticed, our role is invaluable. We prefer to be the quiet heroes in the background, unseen but reliable, rather than associated with problems. Our presence is subtle yet fundamental, being the basis of safety and effectiveness in medical environment.



# MERYedge

MERYedge is an innovative solution designed to redefine the aesthetics and functionality of medical spaces. It is the only unit where the front and sides form a uniform structure that allows for easy disassembling. Its unique style, simplicity and elegance give rooms a new, unconventional character, making them stand out in terms of design.

The construction of MERYedge allows to hide all electrical sockets, IT sockets and lighting, what gives an impression of clarity and simplicity. This BHU not only enhances the aesthetics of the interior but also introduces a new quality to daily use, combining modern appearance with maximum functionality.







*„Fashion fades, style remains“  
Gabrielle Bonheur Chanel*



## INSPIRED BY THE ENVIRONMENT

MERYedge unit comes with all what is needed, including reading lighting and room lighting (LED), medical gas outlets, electrical and IT sockets. Its stylish construction and ergonomic arrangement of electrical sockets at the lower part ensure not only functionality but also make this BHU exceptionally aesthetic.

MERYedge characteristics:

- Durable, anodized aluminum 2nd fix of gas outlets
- Elegant elements made from brushed, anodized aluminum
- One-part housing
- A sliding system for shelves or IV poles

This combination of durability, modern technology, and style creates a unit that meets the highest standards of ergonomics and design.



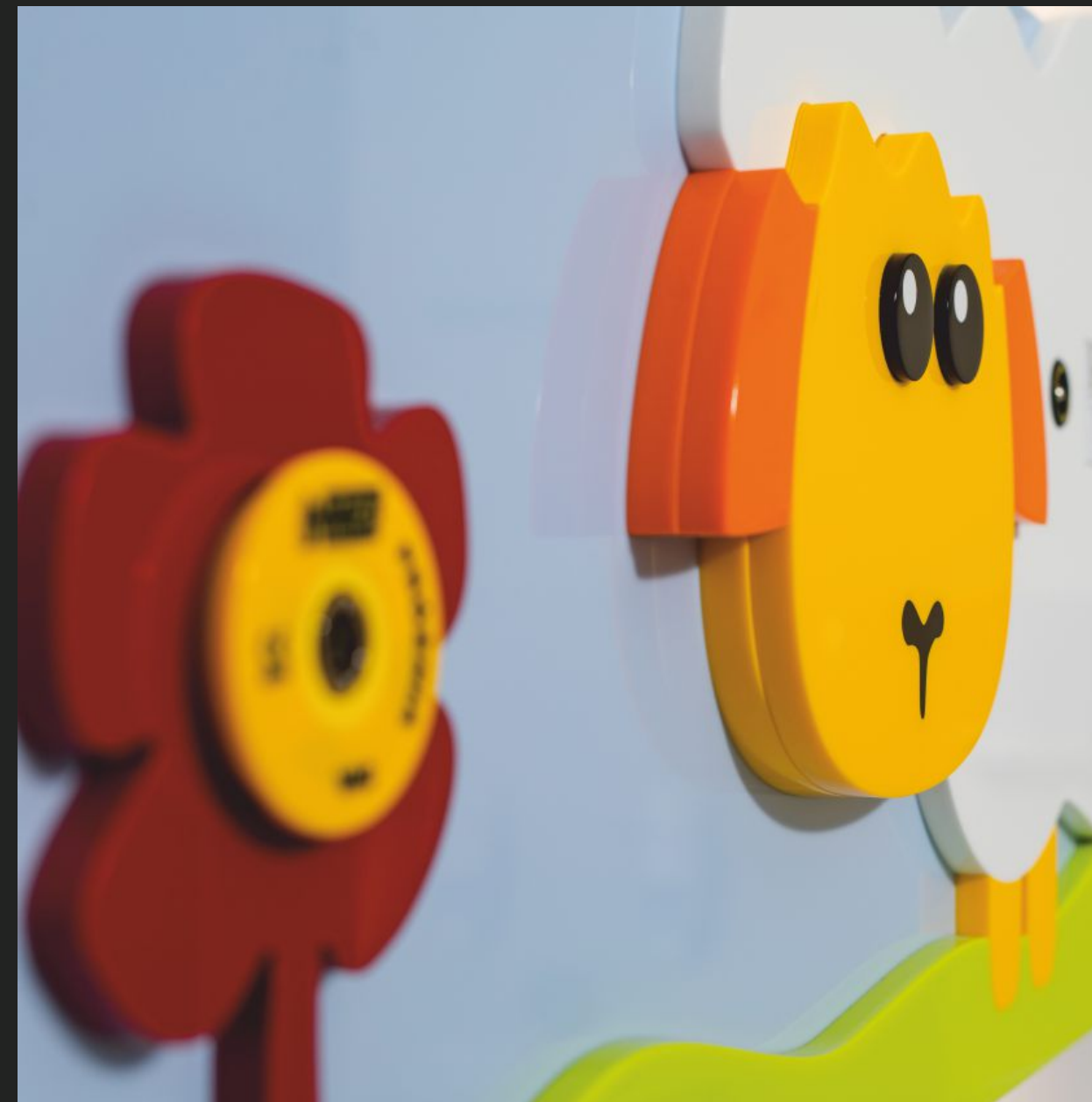
# MERYfun

MERYfun is a revolutionary solution that brings a new dimension of joy to children's wards, eliminating boredom and monotony. Thanks to multiple graphic possibilities, each hospital room gains a friendly, colourful character, making young patients feel more comfortable. High-quality finishes and innovative safety solutions ensure that MERYfun is appreciated not only by medical staff but, above all, by children.

This combination of functionality, aesthetics and innovation makes MERYfun an essential component of every children's ward, creating a space where technology and design work together for the benefit of young patients.







The front panels of MERYfun, made from safe PVC materials or Corian® by DuPont®, offer not only excellent durability but also exceptional protection. With the ability to absorb impact during mechanical damage, they deform in a controlled manner, ensuring top-level safety.

Corian® additionally allows to create unique, three-dimensional graphics that add depth and aesthetics while maintaining the highest hygiene and ergonomic standards.

Safety is our priority, and a child's smile is our greatest reward.



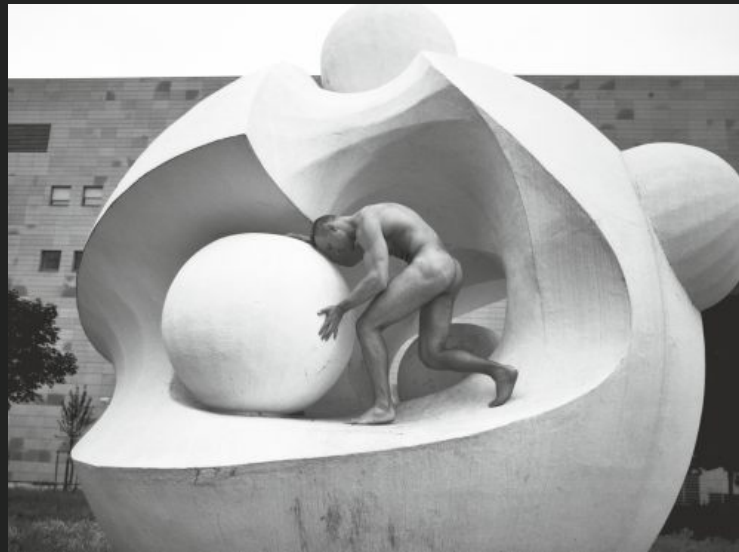


## DISCREET FUNCTIONALITY

The BHU with an additional bed for parents is an innovative solution that combines a bed head unit with a convenient sleeping space for visitors, creating a harmonious solution. The bed pulls out almost silently and automatically in less than 30 seconds with a single button press, and during the day, it remains hidden in a fully functional cabinet, preserving the room's space.

Each design is carefully matched stylistically to the rest of the room's equipment, made from the highest quality materials, such as Corian® and fire-resistant laminates, ensuring elegance and durability. This solution offers parents of young patients complete comfort, integrating functionality and discretion within the hospital space, making it an irreplaceable part of modern medical facilities.





## HARMONY AND SENSITIVITY

Had Henry Ford asked his customers what they needed, they would have replied, "faster horses." Ford did not listen – he anticipated their expectations. At INMED, we follow the same path, not stopping at superficial needs. We draw inspiration from nature, art and people, paying attention to every detail that shapes our products. Thanks to persons like Jakub Łakomy – engineer and artist – our products have a soul, becoming an integral part of the healing process. We present not only technology but also the sensitivity that INMED brings to them. This unique combination of art and science creates harmony that supports healing. Therefore, here we would like to present not only our products, but also the work of our colleague Jakub Łakomy.



# MERYart

MERYart is a unit that adapts to your needs – you decide on its form and graphic inspirations. It brings a piece of art into the sterile hospital environment, adding warmth and colour. With durable, high-resolution prints on Corian® by DuPont® front panels or tempered glass front panels designs, you get incredible colour depth and a unique play of light and image.

This BHU remains fully functional, coming with all necessary medical gas outlets, electrical and IT sockets, as well as lighting including advanced AmbientLight and ControlLight systems. Our designers can create a unique shape and graphic perfectly tailored to each room, shaping a space that becomes more friendly and inspiring for patients and staff.







## ART AND ELEGANCE

MERYart combines elegance and the highest quality, utilizing the most exclusive materials – stone, glass, ceramics, metals and gemstones. This BHU offers much more than just functionality. It combines sophisticated design with advanced technologies not typically found in these types of units.

MERYart can become more than just an element of interior design – it can be a true work of art, unique in its form and inspiring in its function. This unique solution brings not only functionality to the hospital space but also beauty and creates interiors that captivate and increase aesthetic standards in medicine.



## DISCRETION

MERYart is a type of unit that subtly blends into the hospital space, harmoniously complementing wall textures, claddings and graphics. Its shape can be perfectly adjusted to the room's character and equipment, forming a coherent, aesthetic whole. This solution introduces a sense of harmony and tranquillity into the interior, being at the same time very discreet part of it.

MERYart is not only practical but becomes also an integral part of the interior, subtly increasing its aesthetic value and creating an unique, inspiring environment.





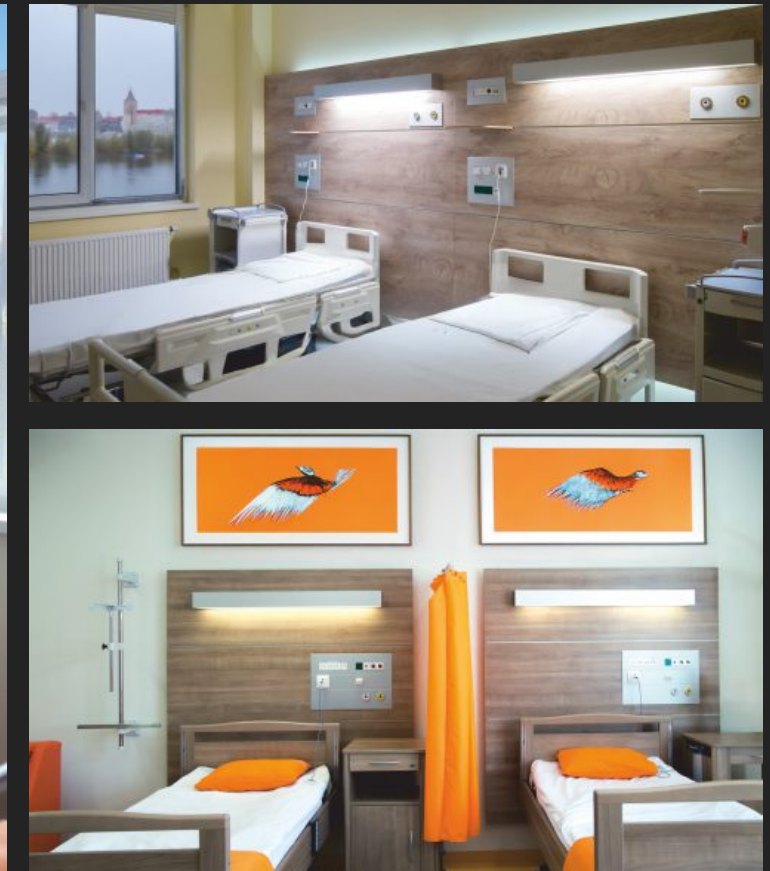
# MERYwall

MERYwall key feature is individuality. Shapes, colours and fittings are made to perfectly match with interior of the hospital room what undoubtedly calms the patient. A modular construction of MERYwall enables almost any configuration of beds, chairs or furniture in a hospital room. This unit means a harmony and elegance what gives a 'soul' to hospital space.

MERYwall is not just a product – it is a philosophy of modern solutions in patient rooms. Each element starting from precisely designed lighting through ergonomic body to unique functionalities, was invented to add character and warmth to the interior of a hospital room.







## PERFECTION. HYGIENE. SAFETY

MERYwall perfectly met the challenge of balancing colour with hygiene and safety. This headwall is made from non-flammable laminated boards (B fire reaction class) or Corian® by DuPont® material, offering a wide range of textures that meet the expectations of even the most demanding users. Each of these materials not only delights with its aesthetics but is also certified with E1 hygiene certificate, making it environmentally friendly and safe for people.

Corian®, combining beauty with extraordinary durability, is ideal for innovative solutions that stand the test of time. As perfectly smooth and free of visible seams material, that has proven in operating rooms, Corian® is now coming into patient rooms making them unique and elegant.



# MERYcomfort

MERYcomfort is one of the few units on the market designed for maximum accessibility of media for the patient. With a clever layout, the patient has got convenient access to electrical sockets, light switches, USB ports and the nurse call handset. The unit comes with innovative lighting, ensuring comfort for the patient without disturbing others in the room.

MERYcomfort offers much more than basic functions, such as medical gas outlets, electricity and lighting. The unit comes also with integrated shelves for monitoring equipment and a practical cabinet for the patient, ideally integrated into the design. This solution provides not only functionality but also top-level convenience, creating a space tailored to the needs of patients and staff.





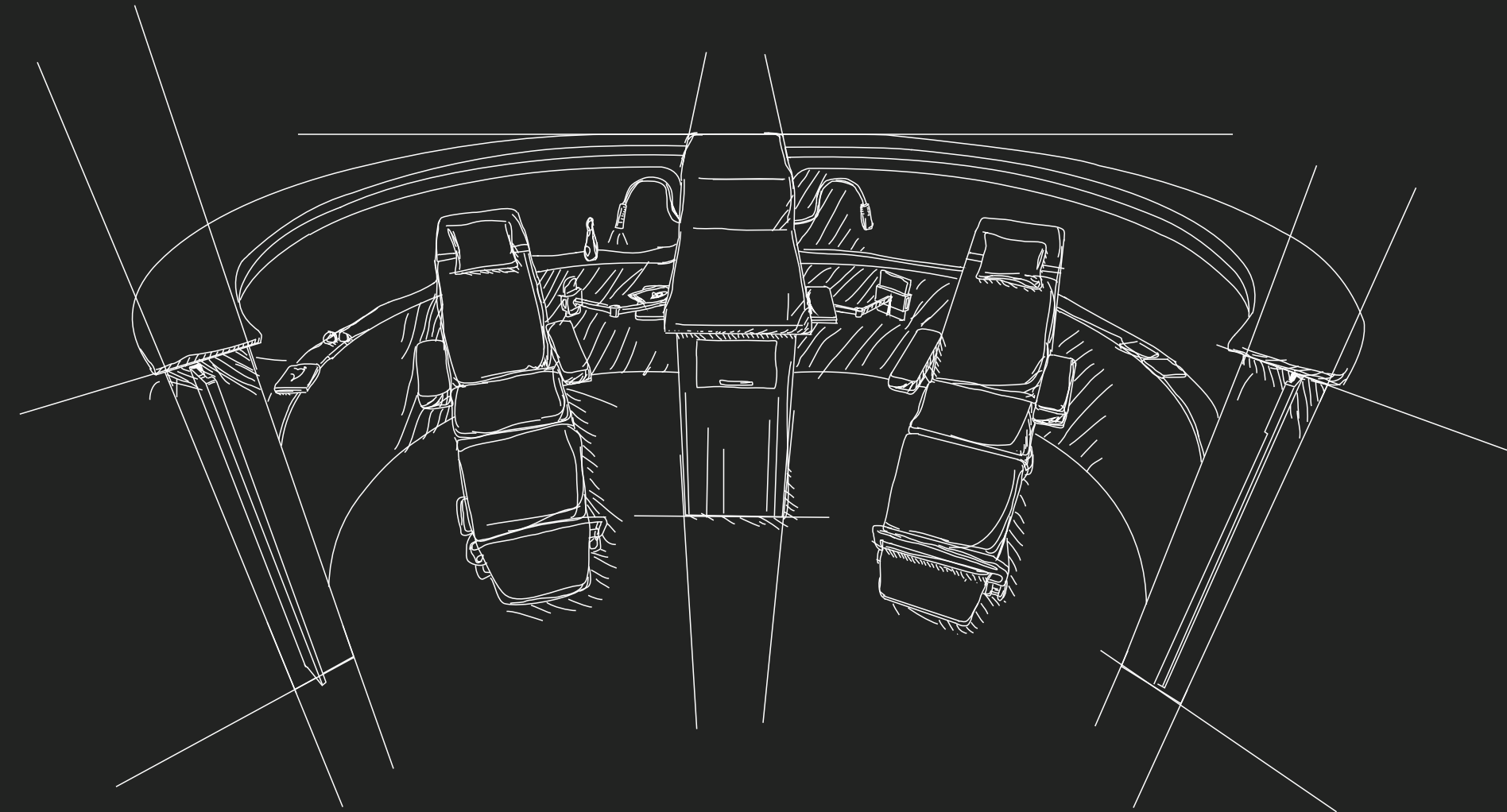


## INDIVIDUALITY. MATERIALS.

At MERYcomfort, we ensure that the patient's space is not only well-organized but also fully adapted to their needs. A solid aluminum frame provides durability and enables fixing of various elements. Collaborating with clients, we have executed innovative projects, such as MERYcomfort units with integrated refrigerator, decorative neon lighting or bedside cabinets. Our units are unique and every detail is fine-tuned in collaboration with the client. We look forward with enthusiasm to future challenges and ideas that often exceed our expectations.



## FLOOR UNITS



We proudly present our latest development – the world's first floor-based units, responding to patients' growing needs for privacy, comfort and entertainment. This is far more than a standard medical supply unit – it is a true island of tranquillity and a space dedicated to the patient. An island where the patient can find peace and privacy, surrounded by gentle lighting in carefully selected colours. This place becomes their personal sanctuary where comfort and technology harmonize perfectly, creating an environment where they can feel safe and at ease.



# AARON

AARON was designed to provide maximum privacy and comfort while dosing the patients with cytostatic drugs or oncological therapy. It is more than just a functional unit – it is a thoughtfully designed space where the patient can find peace and privacy during challenging treatment moments.

Made from Corian® by DuPont™, a material of extraordinary durability, aesthetic appeal and a rich palette of colours and textures. Its smooth, elegant finish is not only visually appealing but also easy to maintain in terms of hygiene, making it ideal for spaces where safety is a priority.

The patient area offered by AARON can be screened with an integrated curtain, creating an atmosphere of harmony that relieves therapy-related stress.







## SAFETY AND ELEGANCE

The unit comes with medical gas outlets within the patient's reach, hangers for pumps and IV poles, as well as integrated touch-open shelves. Conveniently positioned electrical sockets allow charging mobile devices, and carefully designed lighting creates a delicate, soothing atmosphere. One of the unique elements is the individual Bluetooth module with speakers integrated into the walls of the unit. This subtle solution allows the patient to feel surrounded by music, adding a new level of comfort during treatment. For medical staff, AARON offers fully functional spaces, including shelves for electronic equipment, a printer, as well as a docking space for a computer.



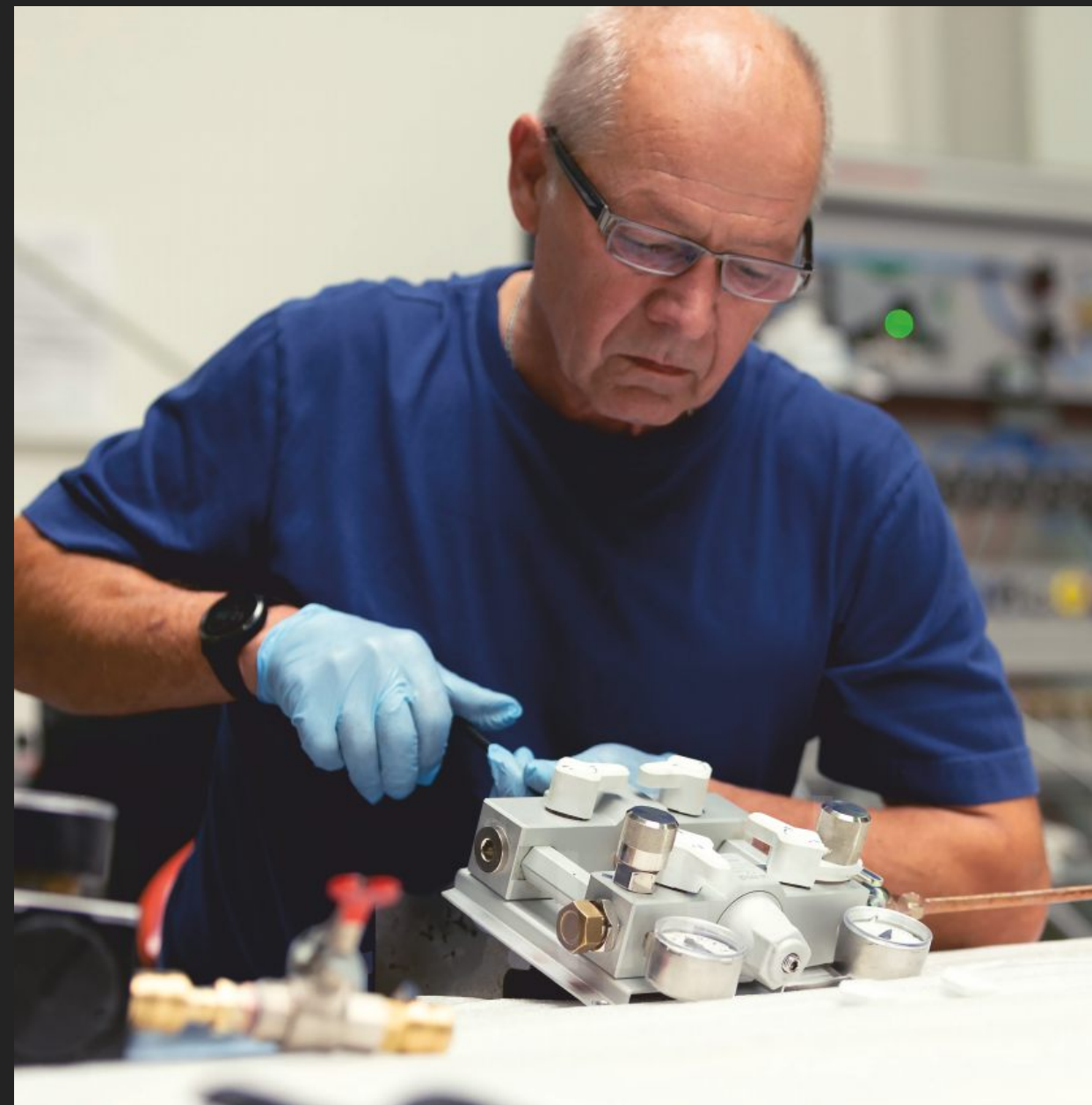
## FACTORY

INMED factory is located in Kępice, next to Wrocław. Using over 5000 m<sup>2</sup> production, storage and office space, more than 100 employees come here every day to create hundreds of products for our customers worldwide.

INMED is a friendly place – both for employees and the environment. We use renewable energy sources and strive to balance technology with nature. There is also a pond in our premises that attracts birds resting on its banks what also reflect the core value of harmony with environment and ensures comfort and peace of mind for our employees.







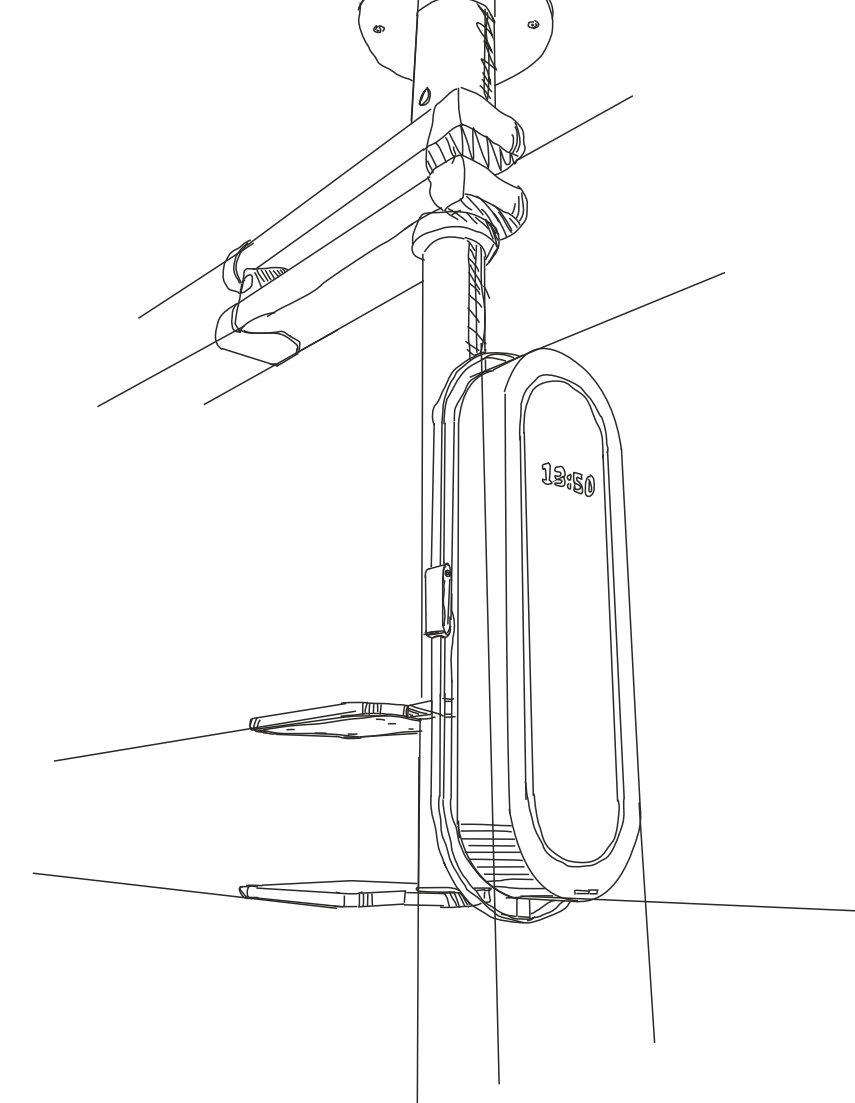
## Production

Production at INMED is a precisely planned process where we use the latest project management, production, and material planning technologies.

Our modern production space and advanced machinery park allow full control over the process – from welding and soldering to 3D printing, milling plotters and 3D robots for material surface finishing. Our powder coating facility meets the highest quality standards, and each stage of production is conducted with respect for the environment, what is certified by ISO 14001 certificate.



## CEILING PENDANTS



LISSA ceiling pendants family symbolizes quality, reliability and a strong market position. Today, however, we are embarking on a journey into the future, bravely crossing the boundaries of what is known and expected.

The new generation of pendants is more than just a continuation – it marks the beginning of an entirely new era. Anticipating our customers' expectations, we redefined every detail, creating a fresh vision of medical solutions where each line, material and function reflects engineering excellence inspired by the future.



# The Future Begins Today

The unit cover, made of the exceptionally durable material Corian® by DuPont™, combines functionality with modern design. The rail fixed around the body not only facilitates fitting of small devices and medical accessories but also serves as a component that allows movement of the entire structure. Ergonomic handles make it easier to release the brakes, ensuring intuitive and smooth move in a dynamic operating theatre environment. The technological core of the unit, however, is the display, cleverly hidden beneath the Corian surface. It serves as communication hub showing the current time and integrating elements of BMS alarm system, FM radio operation and audio streaming via Bluetooth. The unit also constantly monitors the quality of the environment, controlling noise levels and volatile organic compounds (TVOC) to ensure complete comfort and safety.







## INNOVATION IN SPACE

Coming with a multi-axis, swivel ceiling arm, the pendant provides easy access to any area within the operational field. However, the true breakthrough lies in the rotating shelves, marking the first such application in the history of medical technology. A key design solution is the retractable part underneath which medical gas outlets, electrical and IT sockets are placed, serving at the same time as a spacious storage for cables. When the retractable section is closed, the unit integrates harmoniously with the surroundings, emphasising aesthetics and uncluttered operational space.

Designed from scratch, free from the limitations of traditional ceiling pendants, this unit introduces a new definition of medical functionality. It is light, elegant and minimalist, occupying minimal space while maximizing efficiency. Perfectly conceived and designed in every detail, not only does this unit do its job but also brings harmony and calm to the operating space, which is crucial in such a demanding working environment.





## LISSA

LISSA ceiling pendants family personifies flexibility and offers almost limitless configuration possibilities – starting from service head shapes, horizontal and vertical setups to arms movement available in both horizontal and lifting versions.

LISSA pendants are used in the most demanding spaces, such as operating rooms, intensive care units, as well as neonatal intensive care units. The wide range of arm movement enables precise and ergonomic positioning of the service head, ensuring full working comfort and easy access.

An innovative bearing design allows smooth movement even if fully loaded what make LISSA pendants a synonym for functionality and reliability.





## UNLIMITED POSSIBILITIES

When designing LISSA pendants, we combined advanced, robust arms with service heads of various shapes: rectangular, trapezoidal, triangular and square. This unique combination equals almost unlimited configuration options, allowing the user to customize the equipment to their specific needs. LISSA pendants are designed to provide the highest level of work comfort, what results in top- quality of patient care. Every detail is thought out with the utmost care to support medical staff in their daily challenges, offering ergonomics and convenience that are fundamental for better, more compassionate care.





LISSA pendants allow full integration with anaesthesia devices and free configuration of electrical sockets and gas outlets to meet specific market demands. The modular design allows real-time configuration adjustments, giving users the flexibility to make changes whenever needed.

Every component is manufactured in-house, providing full control over quality and reliability – essential values in a dynamic

medical environment. Thanks to this flexibility, LISSA not only meets today's requirements but is prepared to meet future challenges, providing support at the highest level.









## INVISIBLE PERFECTION

LISSA provides comprehensive solutions for intensive care units and multiplied devices that ensure consistency at work – crucial aspects for minimizing error risk. Our equipment is designed to be very easy to understand by the staff: operation is so intuitive that it practically needs no handling what supports staff and does not cause distractions.

With the option of fully individual configuration, LISSA pendants adapt to users' height, ensuring optimal ergonomics. Additionally, the service head's lightweight construction allows for quick repositioning in emergency situations what ensures safety and comfort in the most challenging conditions.







## PEOPLE DRIVEN BY CHALLENGES

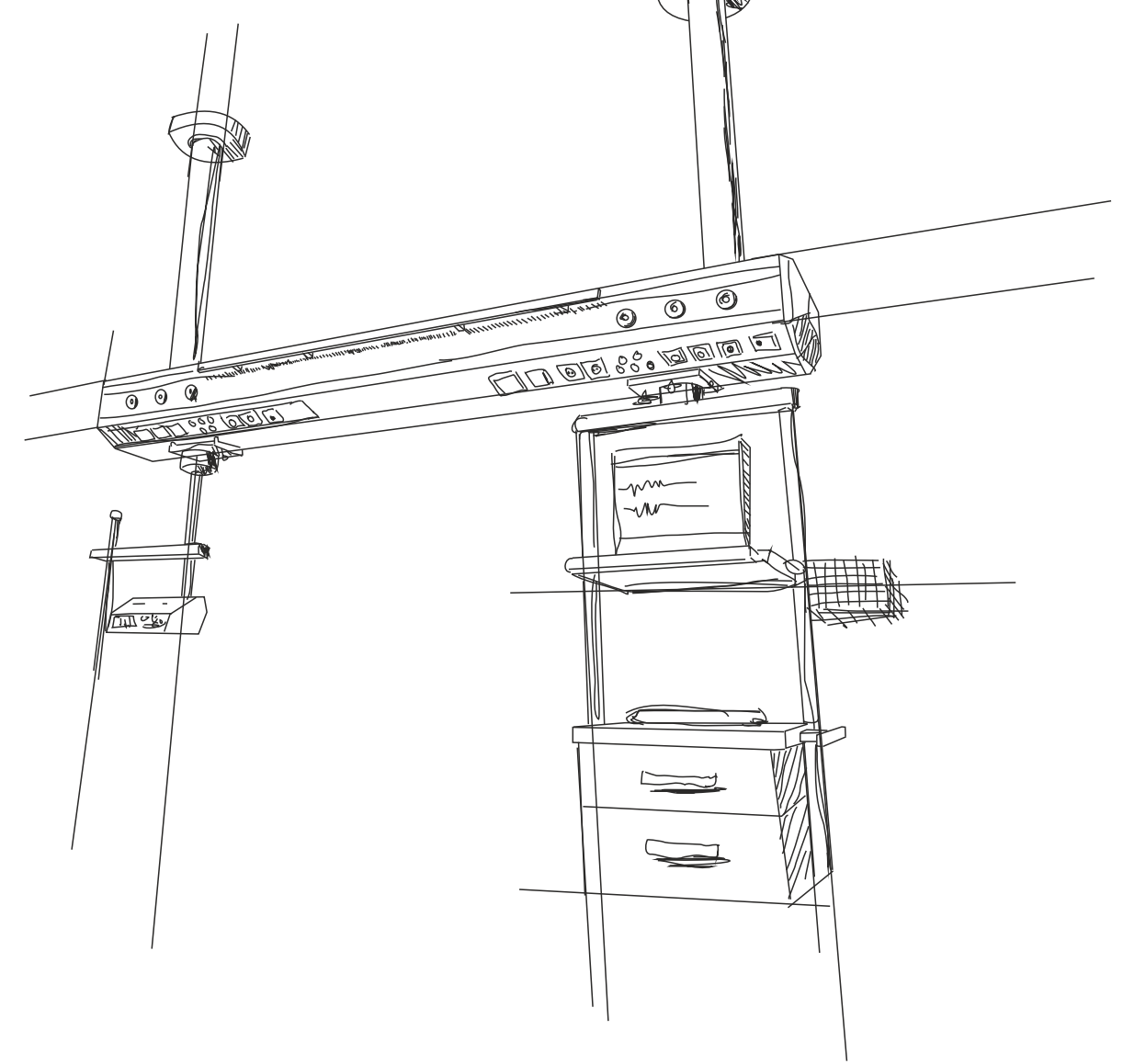
This catalogue is not about products. This is the story of people who create them – the story of Asia, Piotrek, Artur, Tomek, Karol, Monika, Damian, Magda, Kuba, Ania, Łukasz, Ewa, Krysia, Martyna, Ola, Bernadetta, and all the other employees of our company – in the past, currently and in the future. This page is dedicated to them – our colleagues who, every day, give away a piece of their lives to build our history. Each of them is a passionate – sometimes expressing it grandly, another time more subtly. Skydiving, fast machines, fascination with history and archaeology, love for animals, running, dancing, golf, travelling and artistic photography – these diverse passions drive them daily.

These are our heroes, living for challenges that must be beyond them, because only then these challenges are worth their attention and become a source of inspiration.





## ICU BEAMS



CARO ceiling beams might initially seem like a compromise between classic pendants and bed head units. In reality, however, they offer much more – they are solutions created for the most demanding spaces where walls do not allow for installation and the ceiling cannot support heavy loads. These are the locations where CARO beams find their place. Unique and versatile, they harmoniously combine functionality with aesthetics, bringing excellence and reliability to every space.



# CAROcare

CAROcare beams are designed for intensive care units and patient rooms where a clear division into infusion and monitoring sides is essential. Thanks to the body (beam) suspended from the ceiling, CAROcare offers various fitting options – from gas outlets and electrical sockets to medical rails and integrated lighting.

These ICU beams come also with sliding system at the bottom what enables fixing of various elements including shelves, service heads and arms. This comprehensive solution adapts to the most demanding environments, ensuring full functionality and support in patient care.







## ENDLESS ADAPTATION POSSIBILITIES

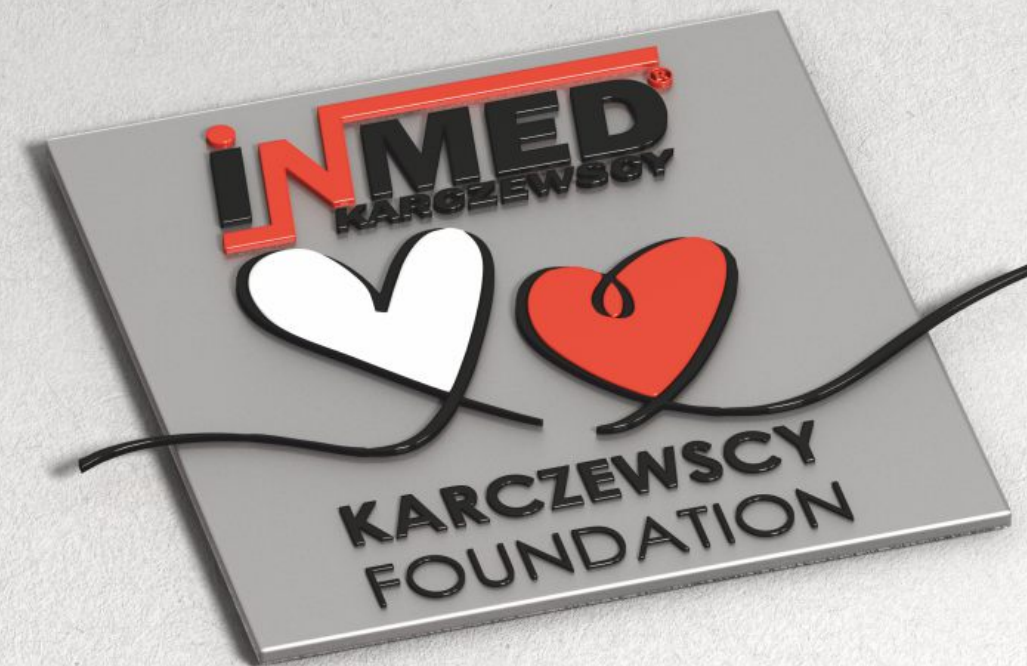
CARO beams offer almost unlimited arrangement options. They can come as multi-beds solutions for the required number of beds. On demand, the beams can be arranged in various shapes, such as L or U, creating a space ideally suited to the ward's specific needs.

CAROccare provides also the possibility of fixing various types of service heads – from triangular and square to rectangular and polygonal – all with options to fit medical gas outlets and electrical sockets. These 'LISSA design' service heads provide full flexibility and excellent functionality in every medical environment.



WE GIVE YOU WHAT IS MOST  
PRECIOUS. OUR HEART.

Krystyna and Edward Karczewski have been known for their commitment and they have never left any request for help unanswered. When the time came to hand over the company into the hands of professional managers, they channelled their energy to what they enjoy most – helping others. Currently, Krystyna and Edward, with all their heart and dedication, do good in the world through their Foundation, creating values that inspire and change the lives of many people.





## Foundation

INMED Foundation of Krystyna and Edward Karczewski, established in October 2021, expresses our company's deep commitment to Corporate Social Responsibility. Through its initiatives, the foundation coordinates numerous projects supporting healthcare facilities and individual beneficiaries, constantly extending the range of activities. We focus special attention on children and young people facing terminal illness or disability, offering them support and care.

Our CSR strategy, based on principles of ethics, transparency and honesty, allows us to build lasting, trust-based relationships with employees and stakeholders. Philanthropy – both local and global – is a key pillar of this strategy, aimed at supporting those who need professional medical care, both children and adults.

INMED Foundation reflects our mission to act not only as a company but also as a socially responsible partner being here to help all communities in need.







PASSION. GENEROSITY. SUPPORT.

Charity auctions organized by INMED Foundation of Krystyna and Edward Karczewski have become an integral part of many cultural and entertainment events. Thanks to generous-hearted people who donate extraordinary items for auction, we raise funds to support our beneficiaries. Their generosity has brought art, concerts by outstanding artists, and even cars and motorcycles to auction – turning passion into real help. Our mission is to support children in difficult situations, giving them hope for a better tomorrow.





„Don't be indifferent”  
Marian Turski



## UKRAINE

The memory of war is deeply written in every generation of Poles. For our grandparents, it was World War II, Auschwitz, the Holocaust, the Warsaw Uprising. Our parents remember communism and Solidarity's fight for freedom. Our generation will remember the War in Ukraine – a war that should never have happened. That is why we will never be indifferent. As Marian Turski, a survivor of the German Nazi death camp at Auschwitz in occupied Poland, reminded us: "Don't be indifferent, because if you are, then you will not even notice when some kind of Auschwitz will suddenly fall from the sky upon you and your descendants."

We wish Ukraine that freedom and democracy be established in their country forever – a democracy that empowers the majority protecting the rights of minorities at the same.





## NOBLE PEOPLE

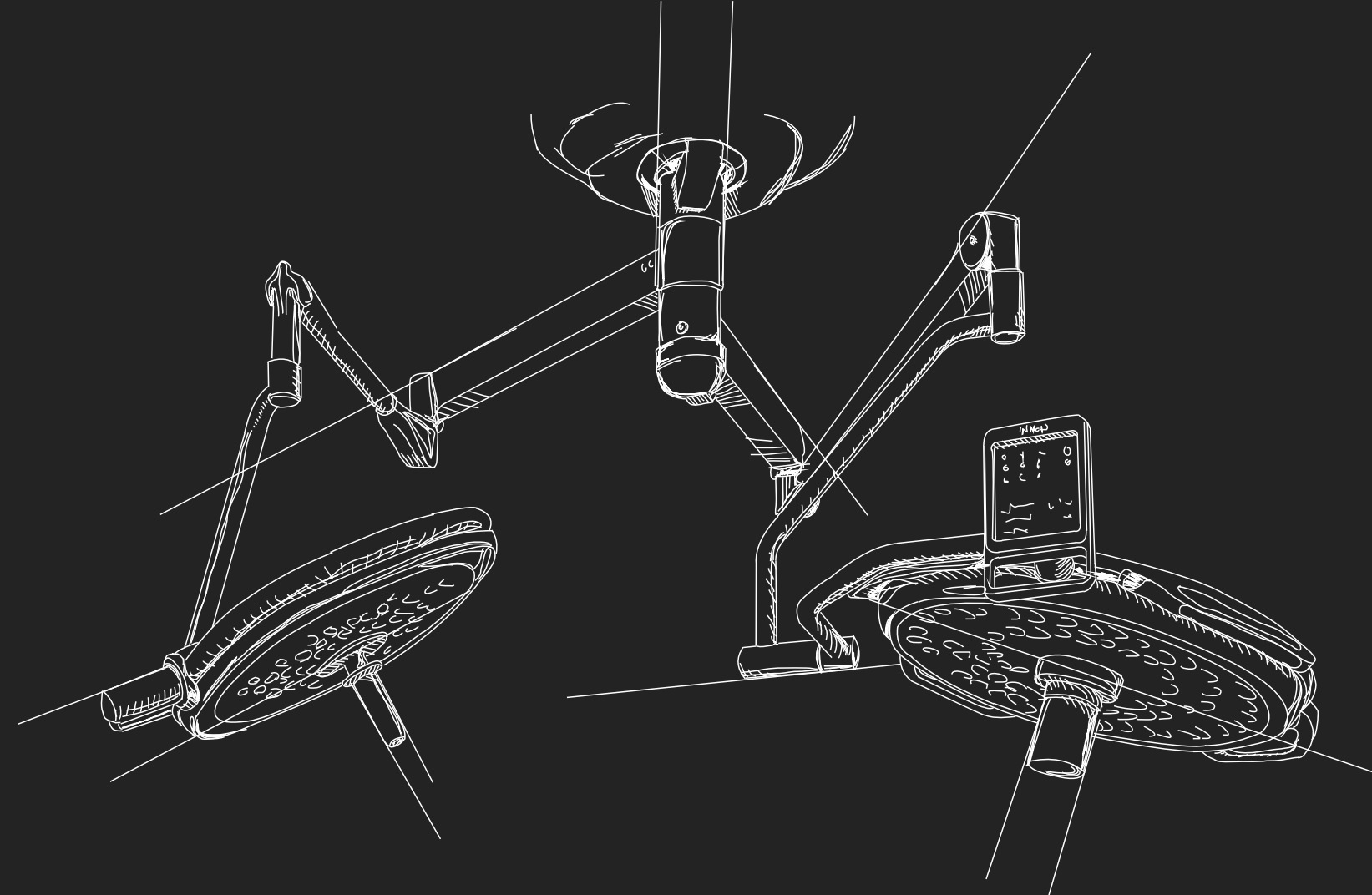


INMED is a company that brings real help – not only to children and those in need in war-torn countries but also to those close to us. Our people, who never refuse to help, are our greatest strength. We look wide, but we always recognize the needs around us. Each year, our employees engage themselves in many initiatives, preparing gifts for those in need from our region. During COVID-19 pandemic, we supported local hospitals by producing face visors for medical personnel.

This part of the catalogue is dedicated to our heroes – people who create and deliver our products to you, but in the meanwhile they devote themselves to provide help wherever it is needed.



## SURGICAL LIGHTS



We would like to present our modern surgical lights – a product that, in terms of style and quality, harmonises perfectly with anaesthetic and surgical pendants. These lights play a crucial role during surgical procedures, providing the highest quality light and an advanced monitoring system coming with a built-in camera.



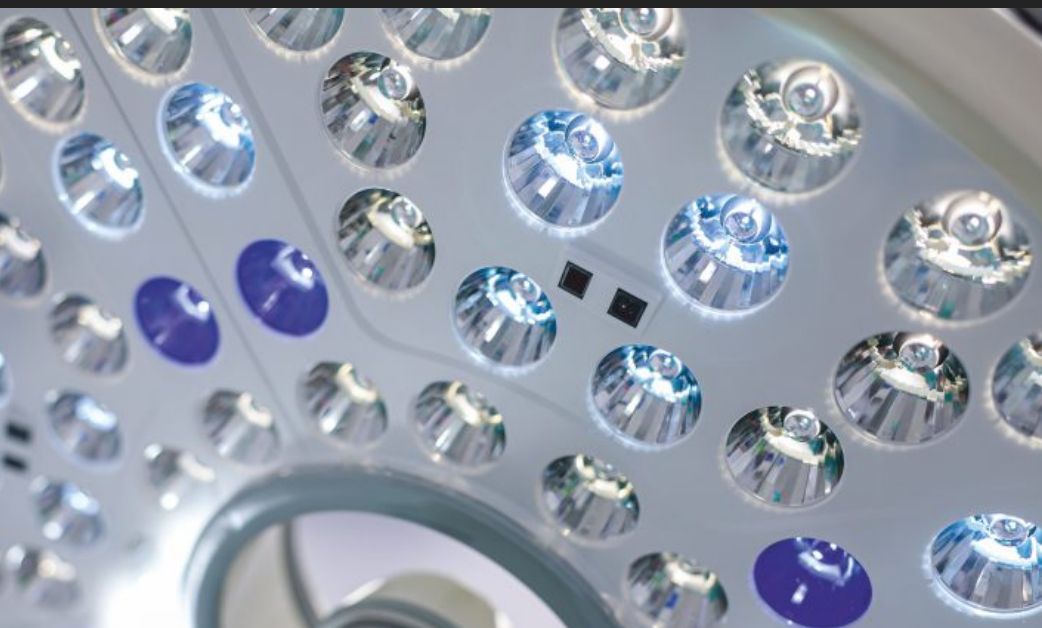
# LISSAled

LISSAled represents an innovative approach to surgical lighting. 140N and 160N types offer 140 klx and 160 klx light intensity levels, and are available as ceiling-mounted, wall-mounted or mobile versions. LISSAled lights come with white LEDs that ensure exceptional light quality and perfect colour rendering. Thanks to this feature it is possible to achieve the highest Ra and R9 indexes.

The lamps come with three control options: a rotating central handle, a touch panel on the lamp and a multifunctional tablet that allows precise adjustment of lighting and camera parameters. LISSAled 120, 160, and 160premium types provide up to 160 klx, meeting the highest operational environment requirements.







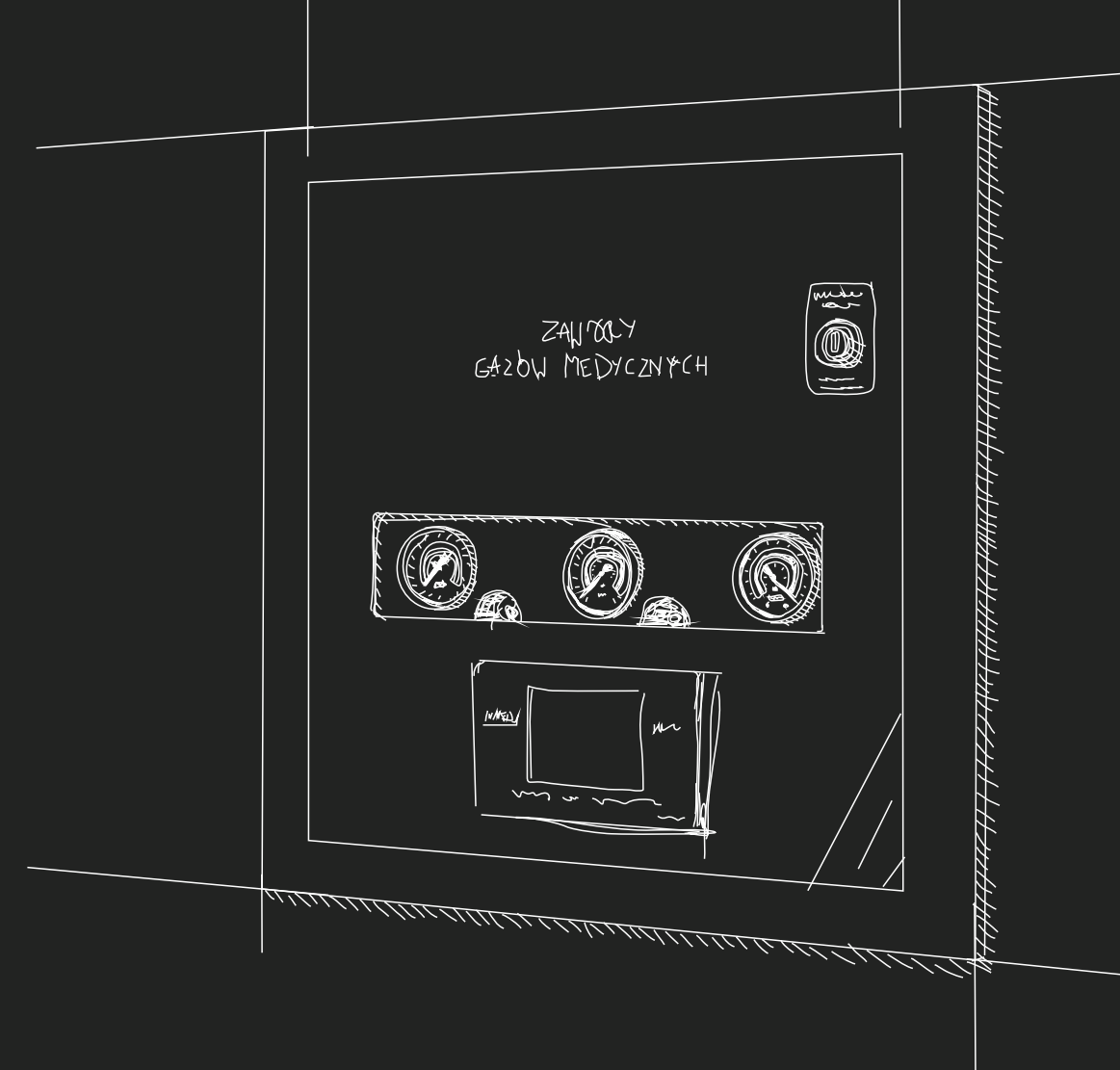
## PRECISION. VERSATILITY.

LISSAled surgical lights stand out for their precision and versatility, offering invaluable support to the medical team during the most demanding procedures. Accommodated with high-quality LEDs, they provide five levels of light intensity adjusting. The special Endo Mode function provides endoscopic lighting that is ideal for minimally invasive procedures, ensuring excellent visibility without unwanted reflections. LISSAled lights allow also for four

steps colour temperature adjustment, enabling adaptation to specific operational needs. The built-in Full HD camera with a 30x optical zoom and 1080p resolution, assures detailed views of the surgical field while the Smart Sensor system increases lighting depth, eliminating shadows and optimizing brightness. With options for ceiling, wall or mobile assembly, LISSAled lights offer full flexibility and adapt perfectly to any surgical space ensuring reliability at the highest level.



# MEDICAL GAS PIPELINE SYSTEMS



We proudly present the Medical Gas and Vacuum Pipeline Systems—a product that marks the beginning of our journey. This is the most essential and absolutely reliable product in our range. Each system is carefully developed at every stage – from the first concept and design, through manufacturing and executing, to detailed evaluation. By meeting the highest European and global standards can we ensure that every patient connected to our system is fully safe.



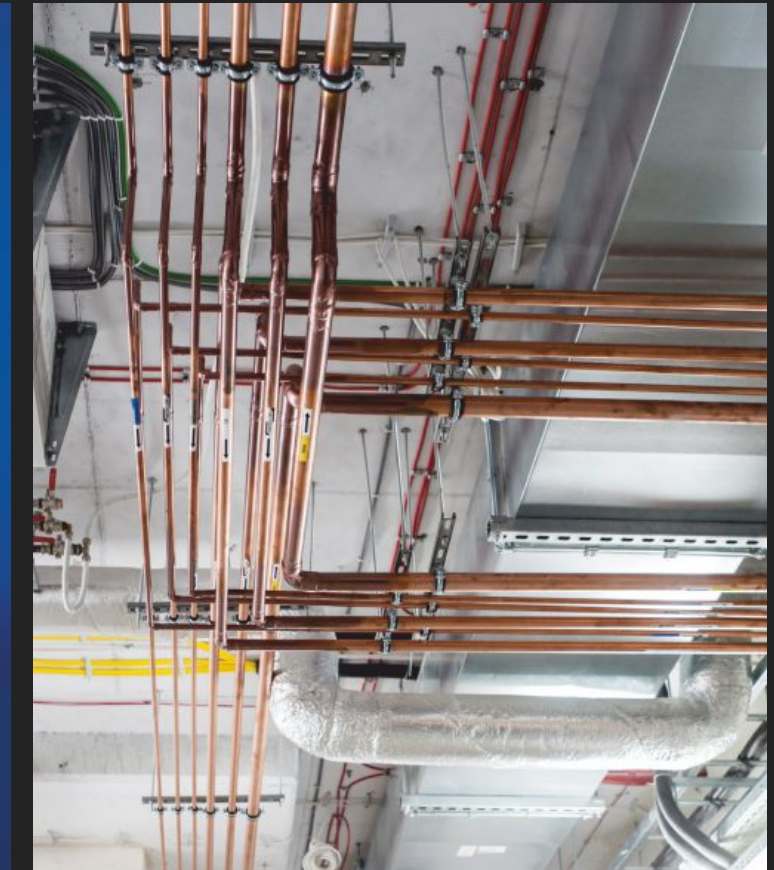
# MGPS

Medical Gas Pipeline Systems is a complex product that is made in line with user's needs and carefully calculated – starting from pipeline diameters, pressure drops to plants capacities. Our committed, professional team ensures that each system complies with stringent ISO, EN, HTM, AFNOR and other standards.

We execute medical gas pipeline systems worldwide, acting as a leader of change and proudly increasing industry standards. Our commitment extends also to participating in the activities of international organizations striving for medical product standardization what means shaping the future of safe and reliable medical care.



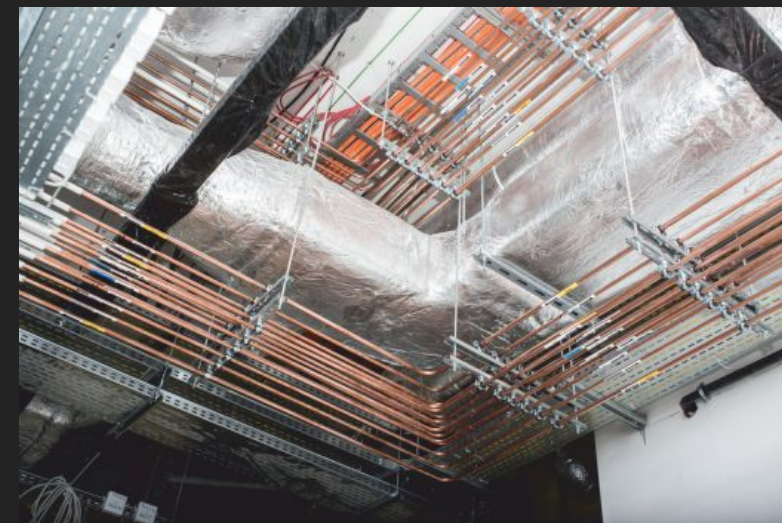




## COMPREHENSIVE SUPPLIER

We are a leading manufacturer and supplier of comprehensive solutions – from manufacturing of MGPS and components, through medical gas plants, oxygen generators, reduction stations to advanced gas monitoring systems. Our expertise includes designing advanced monitoring, detection, and safety systems what – in critical situations such as fires – automatically remove medical gases from areas st risk, ensuring the safety of patients and staff.





## GREATEST CHALLENGES

Our passion for designing medical gas pipeline systems enables us to take on projects exceeding the limits of what is possible. We are immensely proud that during COVID-19 pandemic we delivered the largest and most complex installations, saving lives of great number of people. A profound understanding of standards, coupled with rigorous monitoring and risk analysis, forms the cornerstone of our safety philosophy. Our team has repeatedly created specialized systems that not only met but exceeded existing norms and standards.

We also work for the most demanding customers – executing projects for military hospitals, temporary hospitals and facilities in challenging locations, e.g. in Africa. Each of these projects requires a unique approach, flexibility and the highest precision. Our team is dedicated to meeting these challenges, knowing that every successful project has a real impact on the lives and health of patients in the most challenging conditions.

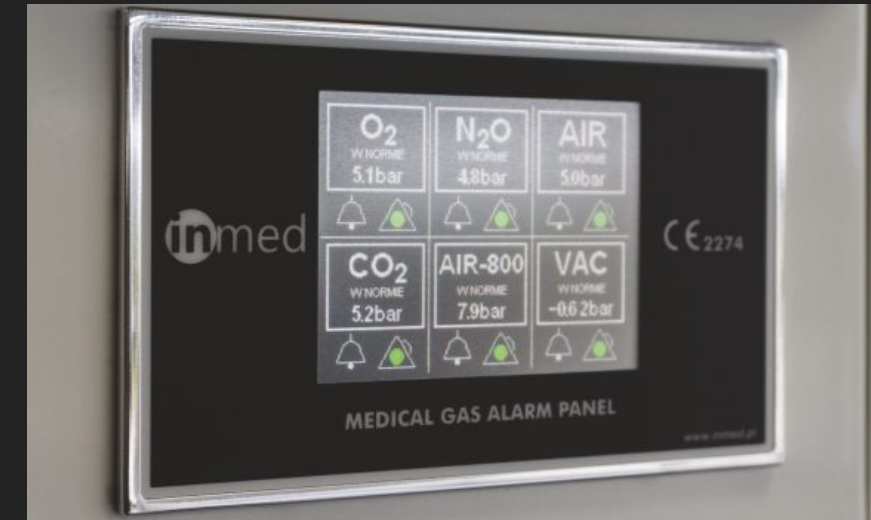




Area Valve Service Units play a crucial role in managing medical zones, allowing for the regulation of gas flow, monitoring their status and ensuring emergency power in the event of a power supply interruption. These units are installed in strategic areas, such as operating rooms, intensive care units and on individual floors of medical facilities. Each box is secured with a lock, which can be opened with a universal key or, in emergencies, by striking the lock mechanism.

AVSUs are CE marked products and are available in customized configurations accommodating O<sub>2</sub>, AIR, AIR800, N800, NO, CO, VAC, and other gases, in accordance with ISO 7396-1.



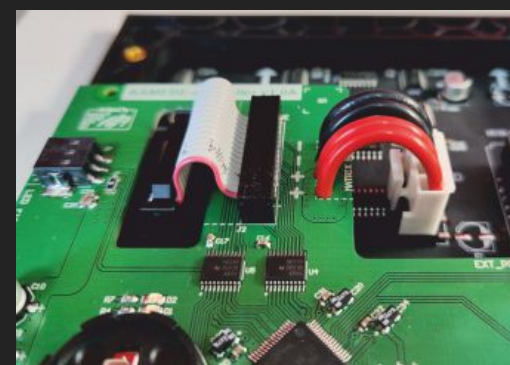
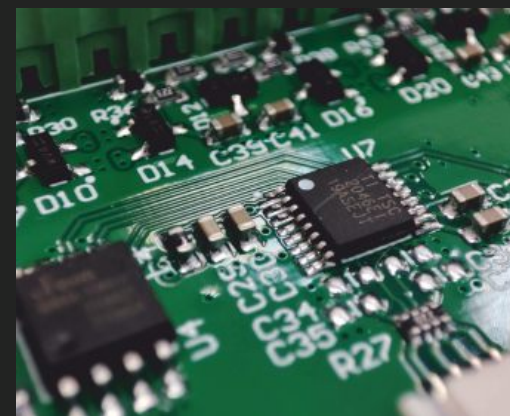
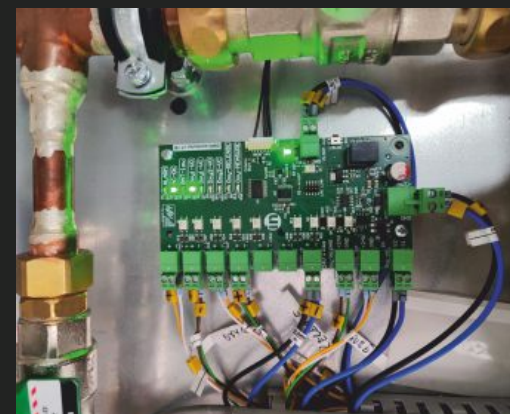
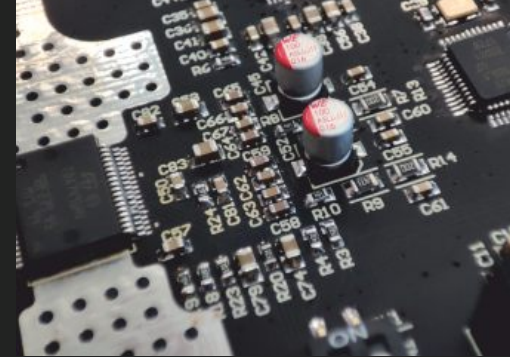
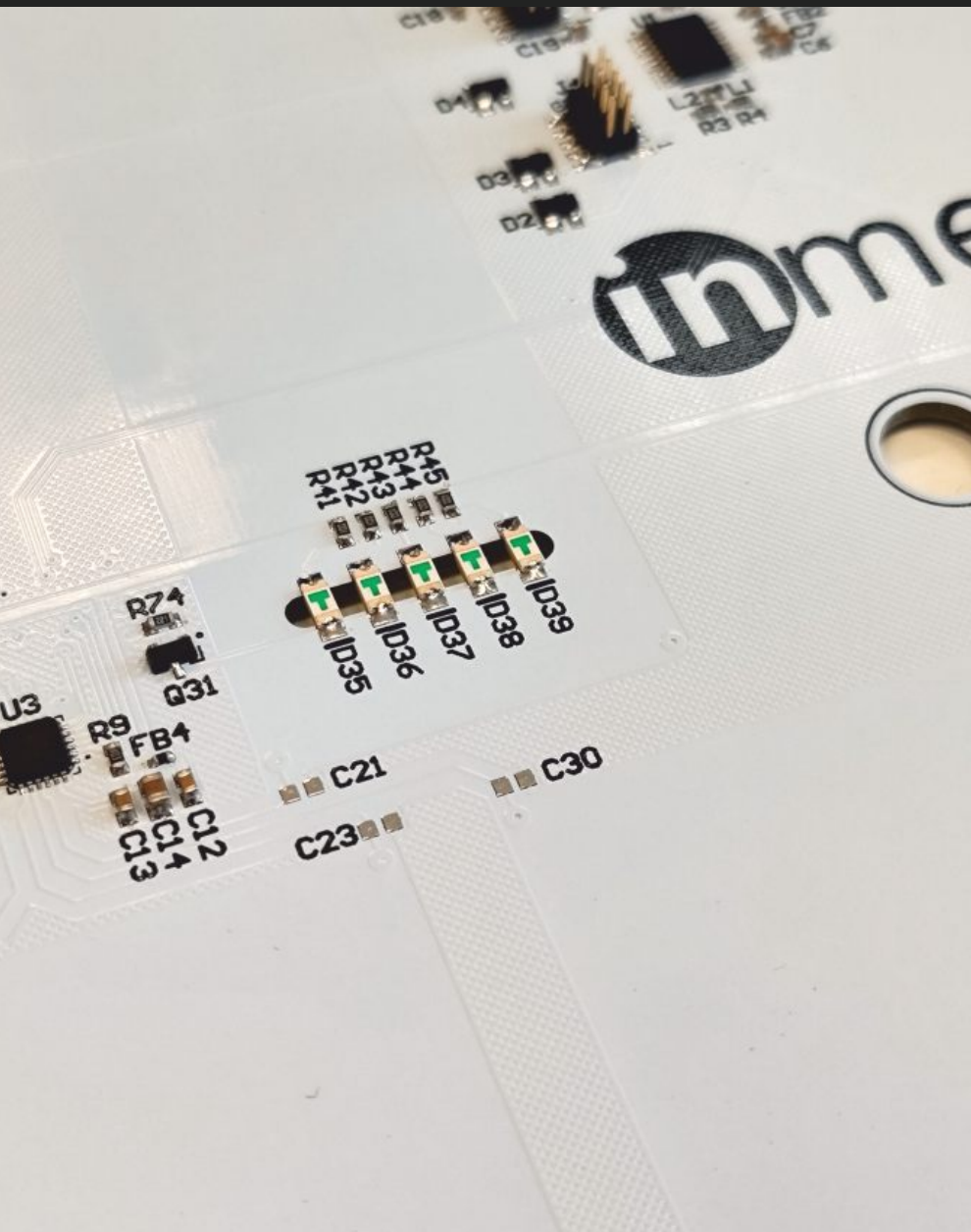


## MEDICAL GAS MONITORING

Medical Gas Alarm Panel is an advanced device that monitors gas pressure and alarms according to ISO 7396-1, using both visual and sound alerts. Coming with a touch LCD screen and speaker, the alarm panel displays alarm levels in an intuitive and clear way. The clear menu allows service personnel to dynamically configure the device – from changing alarm source to customizing the display of gases order and testing alarm functions.

Optionally, the alarm panel can be accommodated with an external voice alert system, notifying of alarms. The device is also integrated with Building Management Systems (BMS) and, through analog interfaces and transducers, enables real-time pressure monitoring.





## Design

The design of medical electronic systems is deeply embedded in our company's DNA. Every day, our engineers develop products using the latest technologies to create advanced electronic systems. We focus on the improvement of devices for monitoring medical gases and systems that monitor the working environment of patients and staff.

Our products meet all the current standards such as ISO 9001, ISO 13485, and RoHS II, and comply with EN 60601-1 and ISO 7396-1 standards, as well as electromagnetic compatibility (EMC) requirements.





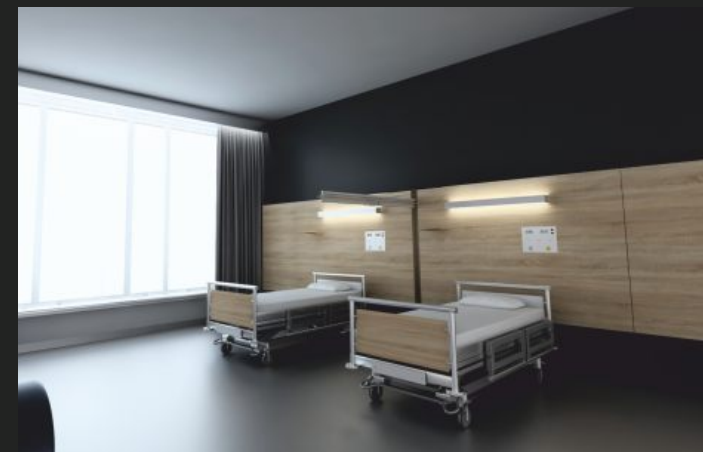
## TAILORED TO YOUR NEEDS

Our customers are our greatest inspiration. Each project begins with a deep understanding of their needs and expectations to create something that goes beyond the standard. Over the years, we have manufactured thousands of unique products that so precisely meet individual requirements that they do not fit into typical catalogue categories.

We want to present these exceptional solutions to you – starting from wall developments for patient rooms coming with built-in partitions, through the most modern operating rooms and elegant wooden products, to mobile devices for supplying medical gases. Each product is thoroughly discussed with the customer and is first developed as a 3D model with full

documentation, allowing to see every needed detail.

Our advanced AR and VR technologies allow customers to immerse themselves in particular facility's space where our products play a central role. This interactive experience allows not only to see but also to feel the functionality of each element. This unique approach combines technology with personalized service, starting a new era of meeting our customers' needs.







*„Nothing can ever happen twice”  
Wisława Szymborska, Nobel Prize Winner*



## FRIENDSHIP

Each of us is different – we have different views, varied experiences and do not always agree on everything. But above all, we are friends who show mutual respect and care. We are one family and this is something INMED has taught us to be. In this catalogue, we wanted to present not only our products but, most importantly, the people who create them.





First Edition (20241104EN)

Wrocław, 2024  
Opracowanie: DC

Copyright by INMED S.A.  
Kwiatowa 32A  
55-330 Krępiec  
POLAND

[www.inmed.pl](http://www.inmed.pl)

This catalogue presents proposals of the products  
and cannot be considered as a commercial offer.

